

# PROGRESS IS IN OUR GENES

At **De Heus Animal Nutrition**, we contribute to the availability and accessibility of safe and healthy food in a sustainable manner. Through our products, knowledge and experience, we help livestock and fish farmers all over the world. As a family-owned company, we are entrepreneurs. We actively seek opportunities to create value and impact in the animal protein production chain. We have an experienced team of **thousands of professionals**, working in over **20 countries** all over the world. This is how we contribute to the development of the agricultural sector. We call it **'powering progress'**.



## MAXIMISING ROBOT EFFICIENCY IN DAIRY PRODUCTION

**ROBOTEXPERT. PREDICTABLE RESULTS**





# MAKE ROBOTIC MILKING WORK FOR YOU

The goal of any dairy farmer is to produce as cost-effectively as possible. Every investment needs to be carefully scrutinised. And when it comes to milking robots, you need to make sure any gains in production or increased savings outweigh your additional expenditure on maintenance and energy.

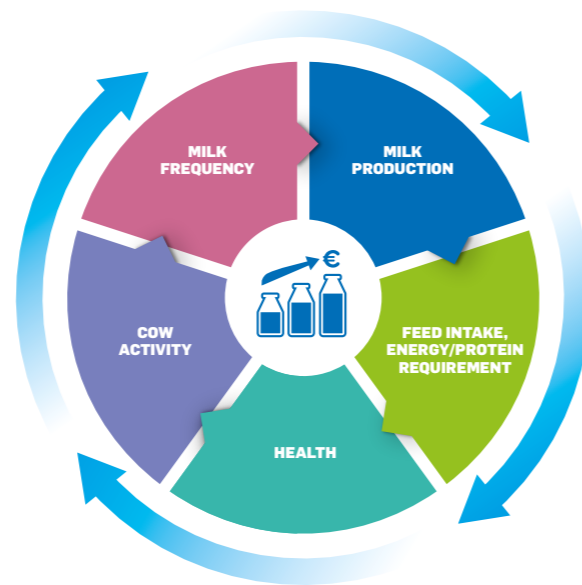
Robotic milking is a continuous process in which everything is connected. Multiple factors can influence the performance of your milking robot – from an animal's behaviour to its diet, feed intake, health and milk production. Maximising the efficiency of your milking robot – and your return on investment – requires an integrated approach. At De Heus, we offer exactly that: our RobotExpert plan takes into account the different factors that affect robotic milking performance – so every animal performs to its full potential.

## DE HEUS' ROBOTEXPERT PLAN CAN HELP YOU:

- Improve work satisfaction and flexibility
- Achieve a healthy, easy-to-manage herd
- Optimise milking robot performance
- Grow your revenues
- Understand which adjustments to make to optimise efficiency

### Creating a wheel of success

The RobotExpert 'wheel of success' describes the relationship between the different factors that impact robotic milking. For example, adjusting settings such as milking frequency directly influences milk production. Milk production impacts your dairy cows' feed intake. This directly relates to the animals' health, their activity levels and, once again, milking frequency (see the practical example on the right page).



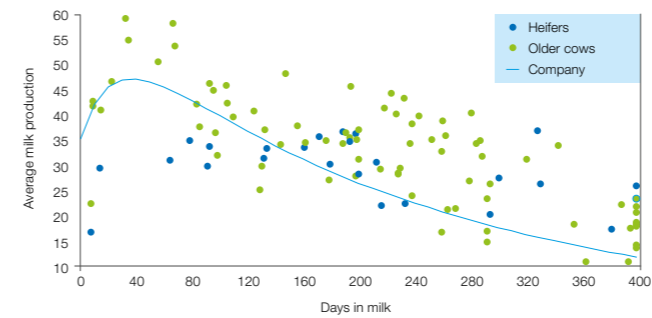
### Turning data into practical, hands-on solutions

De Heus' experienced technical advisors undertake a complete on-farm analysis of your robotic milking operation. We use advanced RobotExpert software, compatible with all milking robot brands, to detect obstacles that may be preventing your 'wheel of success' from turning properly and may be impeding your cows' performance. Our advisors review the data collected and use this to create an easy-to-digest, custom-made report. We then provide practical steps for improving your dairy operation.

### How does it work in practice?

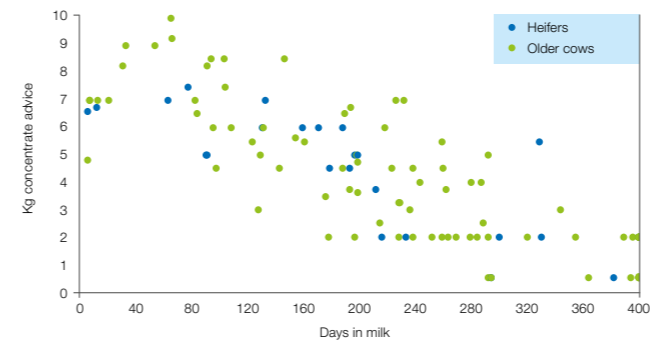
De Heus' technical advisor is asked to perform an on-farm analysis to improve milk robot performance on a dairy farm. He analyses all parameters of the wheel of success, leading to the results illustrated in the graphs below.

### Milk production versus days in milk (DIM)



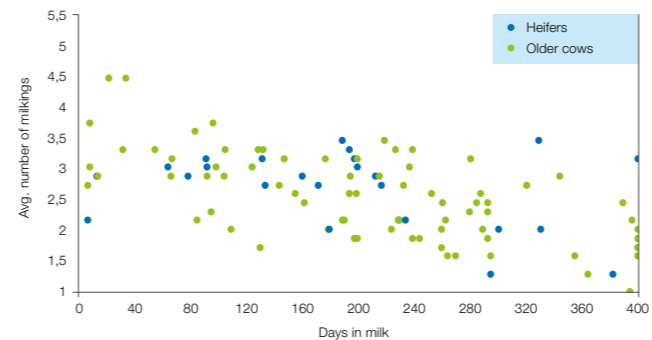
The start of the milk production is good, but a sudden drop in milk production is visible after 60 days in milk (DIM). The graph shows that milk production is not persistent during lactation, and potential milk production is lost.

### Nutrition and compound feed



By analysing the second graph, the advisor discovers that the amount of compound feed received by the cows significantly decreased after 60 DIM.

### Allowance and milk frequency



The third graph shows that the allowance for the milking robot was set incorrectly, leading to a lower milking frequency after 50 DIM.

After reviewing all three graphs, the advisor concludes that the dual impact of the reduced allowance and provision of compound feed negatively affected milk production. By removing both obstacles on the wheel of success, the dairy farmer sees a significant increase in milk production, leading to higher revenues. It is not about checking one parameter in isolation, but rather considering multiple influencing factors to create a positive 'flywheel effect'.

### Continuous support, all year round

Our unique, integrated approach will help you make smart management decisions to improve your milk production and labour satisfaction. We support your milking robot performance through a process of continuous monitoring and improvement, and our advisors are on hand year-round to adjust the parameters as needed.

### Want to know more?

Get in touch with your De Heus specialist today for a tailor-made consultation!

